

NOTE: DO NOT DISCARD the Parts List from the Instruction Bulletin. Place the Parts List in the appropriate place in the machine manual for future reference. Retaining the Parts List will make it easier to reorder individual parts and will save the cost of ordering an entire kit.

NOTE: Numbers in parenthesis () are reference numbers for parts listed in Bill of Materials.

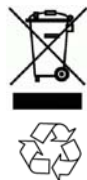
Installation instructions for **kit number 9005782**

SYNOPSIS:

This kit contains the parts needed to replace the battery indicator on S10 machines. Please follow step-by-step instructions.

SPECIAL TOOLS / CONSIDERATIONS: NONE

(Estimated time to complete: 1 hour)



PROTECT THE ENVIRONMENT

Please dispose of packaging materials, used machine components such as batteries and fluids in an environmentally safe way according to local waste disposal regulations.

Always remember to recycle.

PREPARATION:

1. Park the machine on a clean level surface, turn off the machine, remove the key, and set the parking brake.

FOR SAFETY: Before leaving or servicing machine, stop on level surface, turn off machine, and remove key.

2. Disconnect the battery cables from the battery.

WARNING: Always disconnect battery cables from machine before working on electrical components.

3. Remove the rear cover from the machine. Set the rear cover and hardware aside.

INSTALLATION:

1. Disconnect the 13B/BLK wires and 9A/WHT wires from the existing battery gauge. (Fig. 7)
2. Slide a piece of heat shrink (4) onto one of the wires disconnected in the previous step.

3. If necessary, trim the heat shrink (4) to fit over the connector (3) and wires.
4. Connect the 13B/BLK and 9A/WHT wires together with connector (3). (Fig. 1 / Fig. 7)
5. Center the heat shrink (4) over connector (3) and the connected wires and heat the heat shrink over the connection. (Fig. 1)

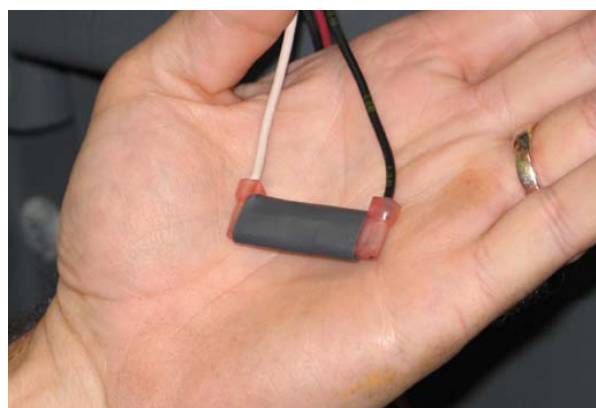


FIG. 1

- Disconnect the 5A/GRN / 5B/GRN wires from the existing gauge and connect the wires to battery indicator (1) terminal 4. (Fig. 2 / Fig. 7 / Fig. 8)

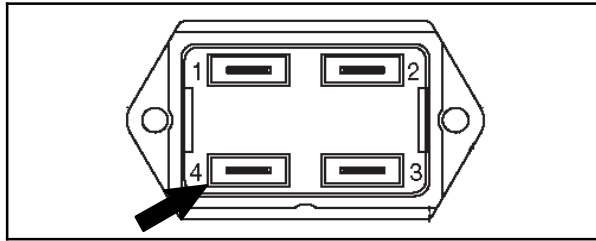


FIG. 2

- Disconnect the 13/BLK / 13B/BLK wires from the existing gauge and connect the wires to battery indicator (1) terminal 2. (Fig. 3 / Fig. 7 / Fig. 8)

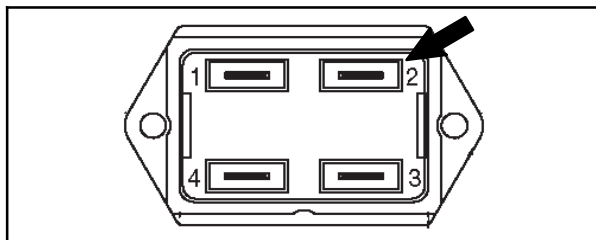


FIG. 3

- Connect the jumper harness (2) to battery indicator (1) terminal 1. (Fig. 4 / Fig. 7 / Fig. 8)

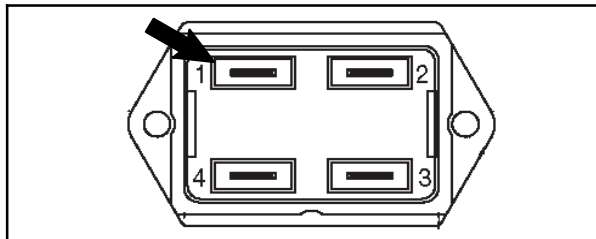


FIG. 4

NOTE: Terminal 3 on the battery indicator (1) is not used. Do not connect any wires to terminal 3.

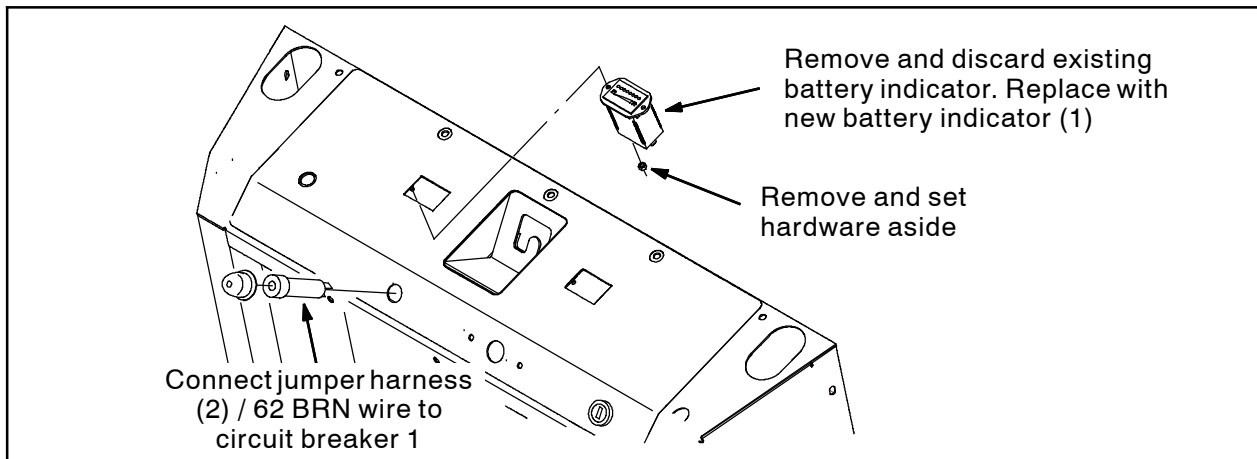


FIG. 6

- Connect one connector (3) onto the other end of the jumper harness (2).
- Disconnect the 62/BRN wire from circuit breaker 1. (Fig. 6)
- Connect the 62/BRN wire to the connector (3) attached to the jumper harness.
- Connect the jumper harness (2) / 62/BRN wire to the terminal on circuit breaker 1 where the 62/BRN wire was previously connected. (Fig. 6 / Fig. 7 / Fig. 8.
- Remove the existing gauge from the instrument panel. Set the mounting hardware aside. Discard the removed gauge. (Fig. 6)
- Use the saved hardware to install the battery indicator (1) into the instrument panel. (Fig. 5 / Fig. 6)

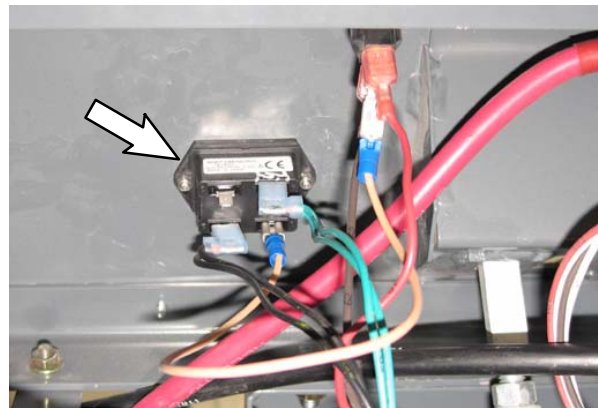


FIG. 5

- Reinstall the rear cover onto the machine.
- Reconnect the battery cables to the batteries.
- Start the machine and ensure the battery indicator functions.

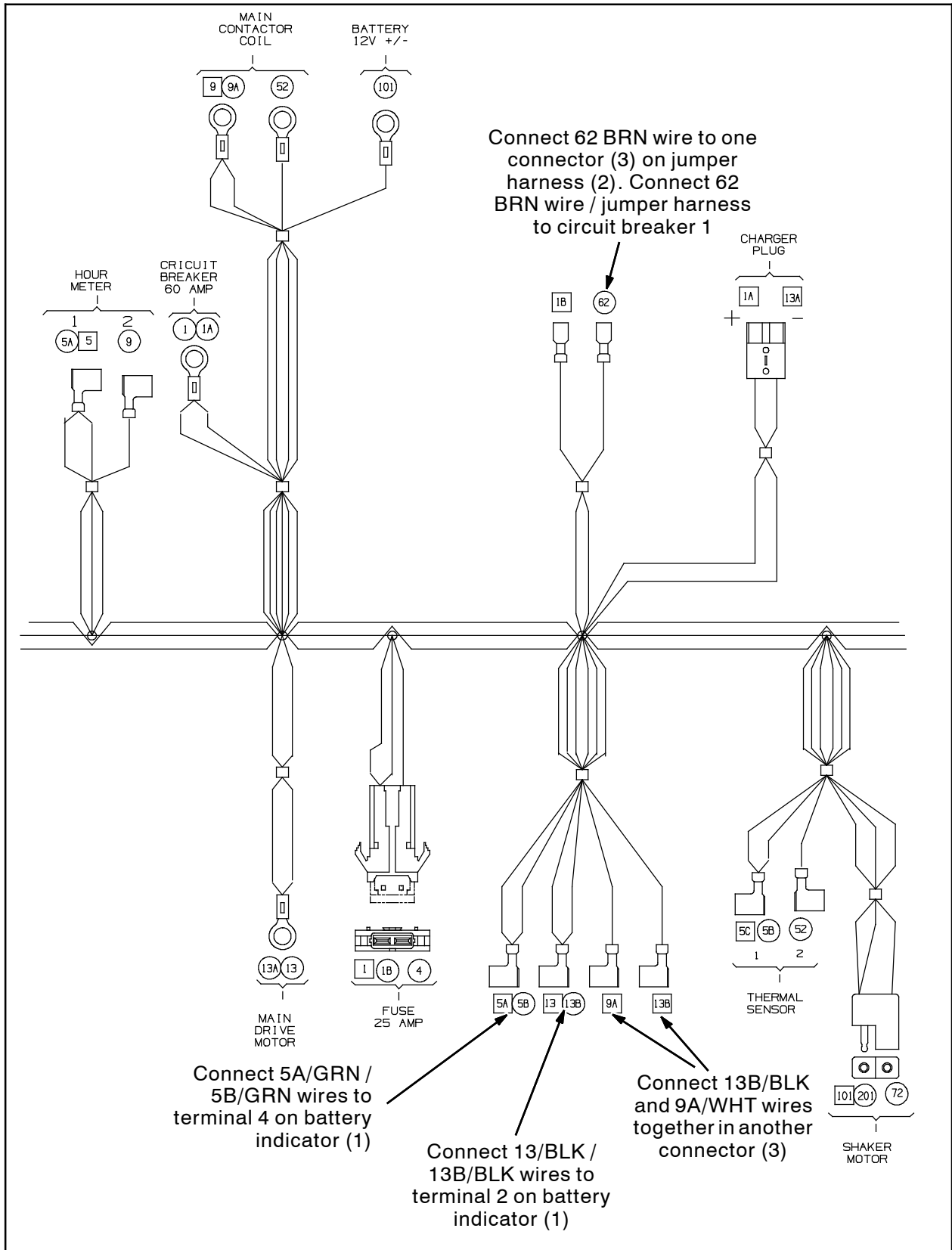


FIG. 7

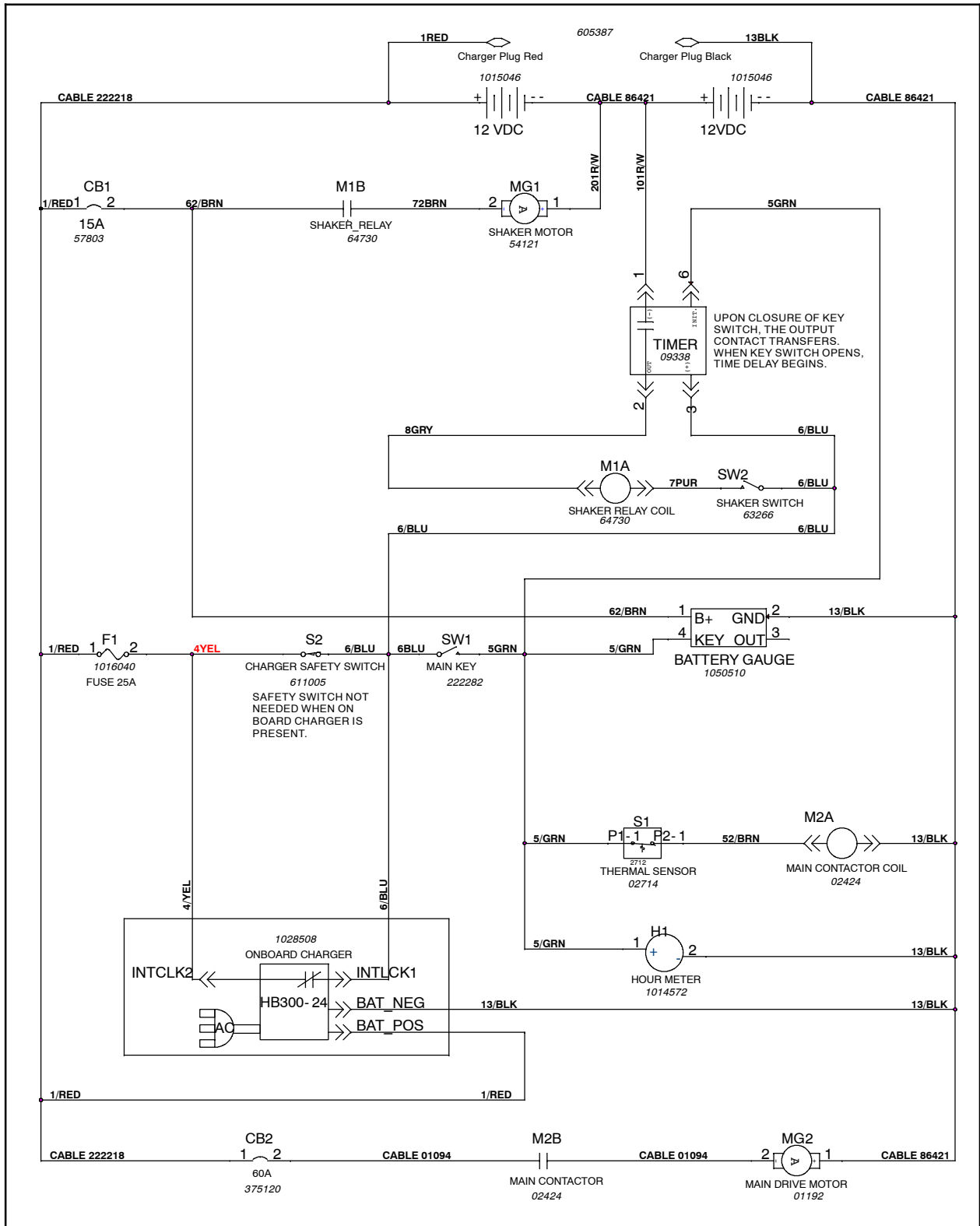


FIG. 8

Bill of Materials for Indicator Kit, Discharge, Battery, Replmt - 9005782

	Ref.	Tennant Part No.	Description	Qty.
▽		9005782	Indicator Kit, Discharge, Battery, Replmt	1
▲	1	1058598	Indicator, Battery, 24VDC	1
▲	2	1050515	Harness, Jumper [2X .250" Fem. Fastons]	1
▲	3	378953	Terminal, VW, .250 X .032	2
▲	4	29862	Tube, Heatshrink, .75ID 02.0L	1

TENNANT COMPANY
P. O. Box 1452
Minneapolis, MN 55440-1452